

# Campfire Ring with Tip-back Anchors



*11" H Model*

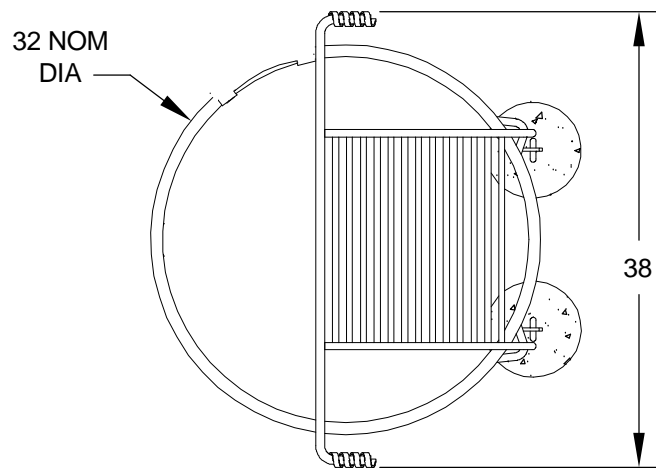
- **Flanged fire ring for strength and safety**
- **Single level, hinged cooking grate**
- **Grate tips back for fire building**
- **Public use-type spring grips of coiled steel bar**
- **Three fire barrier heights available**
- **Fire ring tips back for easy cleaning**
- **Tip-back anchors embedded in concrete footings provide permanent location**
- **"Bottomless" design installs without concrete pad**
- **Quality construction throughout**

---

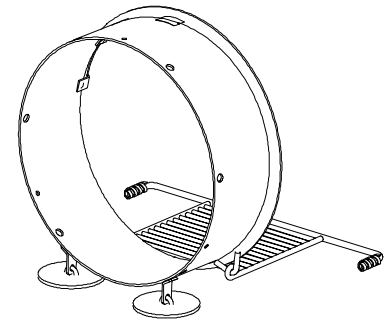
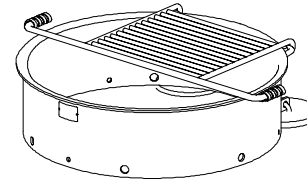
## SPECIFICATIONS:

---

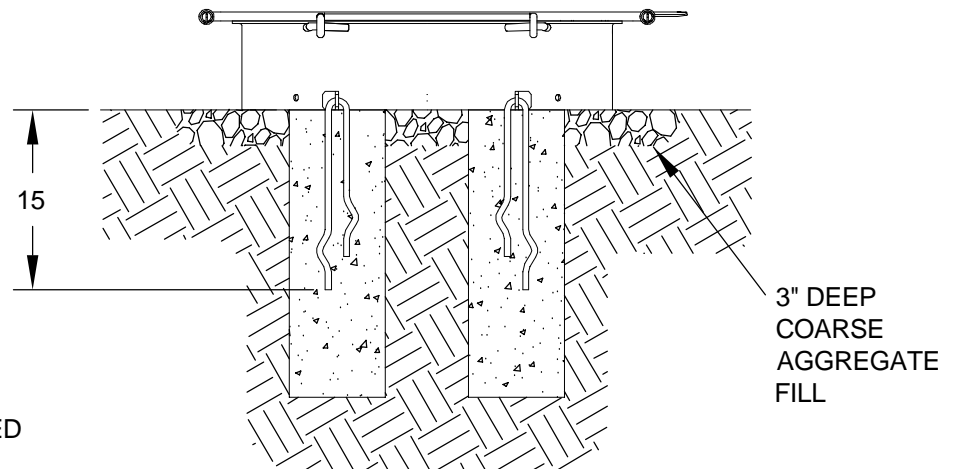
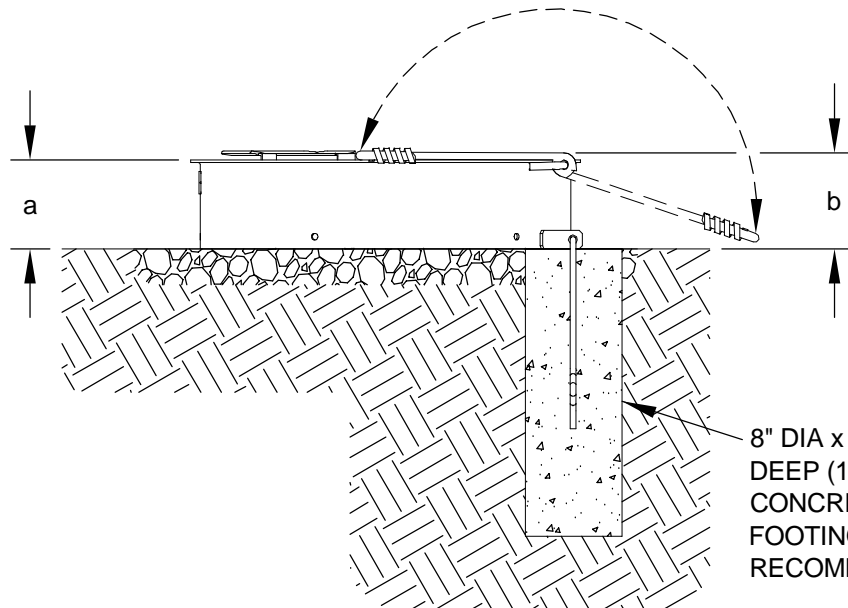
- **7" H Model** has a 7-3/8" high fire barrier. 32" overall dia. ring is constructed from 3/16" thick steel with a formed (NOT WELDED) 1" flanged lip around the top of the ring and 9/16" dia. draft holes spaced around the bottom perimeter.
- **9" H Model** has a 9" high fire barrier. 32" overall dia. ring is constructed from 3/16" thick steel with a formed (NOT WELDED) 1" flanged lip around the top of the ring and 1" dia. draft holes spaced around the bottom perimeter.
- **11" H Model** has an 11-3/8" high fire barrier. 32" overall dia. ring is constructed from 3/16" thick steel with a formed (NOT WELDED) 1" flanged lip around the top of the ring and 1" dia. draft holes spaced around the bottom perimeter.
- 290 sq. in. grate is constructed from 5/8" dia. A-36 steel bars around the perimeter, 3/4" dia. A-36 steel bar for the handle and 1/2" dia. A-36 steel bars to provide the grate surface.
- Grate is attached to and hinges upon 2 tightly formed eyelets made from 5/8" dia. A-36 steel bar that make a mechanically secure theft-proof attachment.
- Grate tips over backward to allow unobstructed viewing of the fire by persons seated around the fire. Grate is supported by the ground when tipped back so grate cannot be vandalized.
- Grate handle is provided with two substantially constructed spring grips suitable for public use made from 1/8" x 1/2" steel flat bar.
- Ring is provided with hinged anchoring device to allow ring to tip upward for easy cleaning. Two 1/2" dia. steel "U" anchor pins with deformed ends insert 15" into concrete footings.
- Entire unit is finished in high temperature, heat resistant, nontoxic black enamel paint.



SHOWN IN TIP-BACK  
POSITION FOR  
CLEANING



MODEL NUMBER	DIMENSION	
	a	b
7" H Model	7-3/8	8
9" H Model	9	9-5/8
11" H Model	11-3/8	12



ALL DIMENSIONS IN INCHES